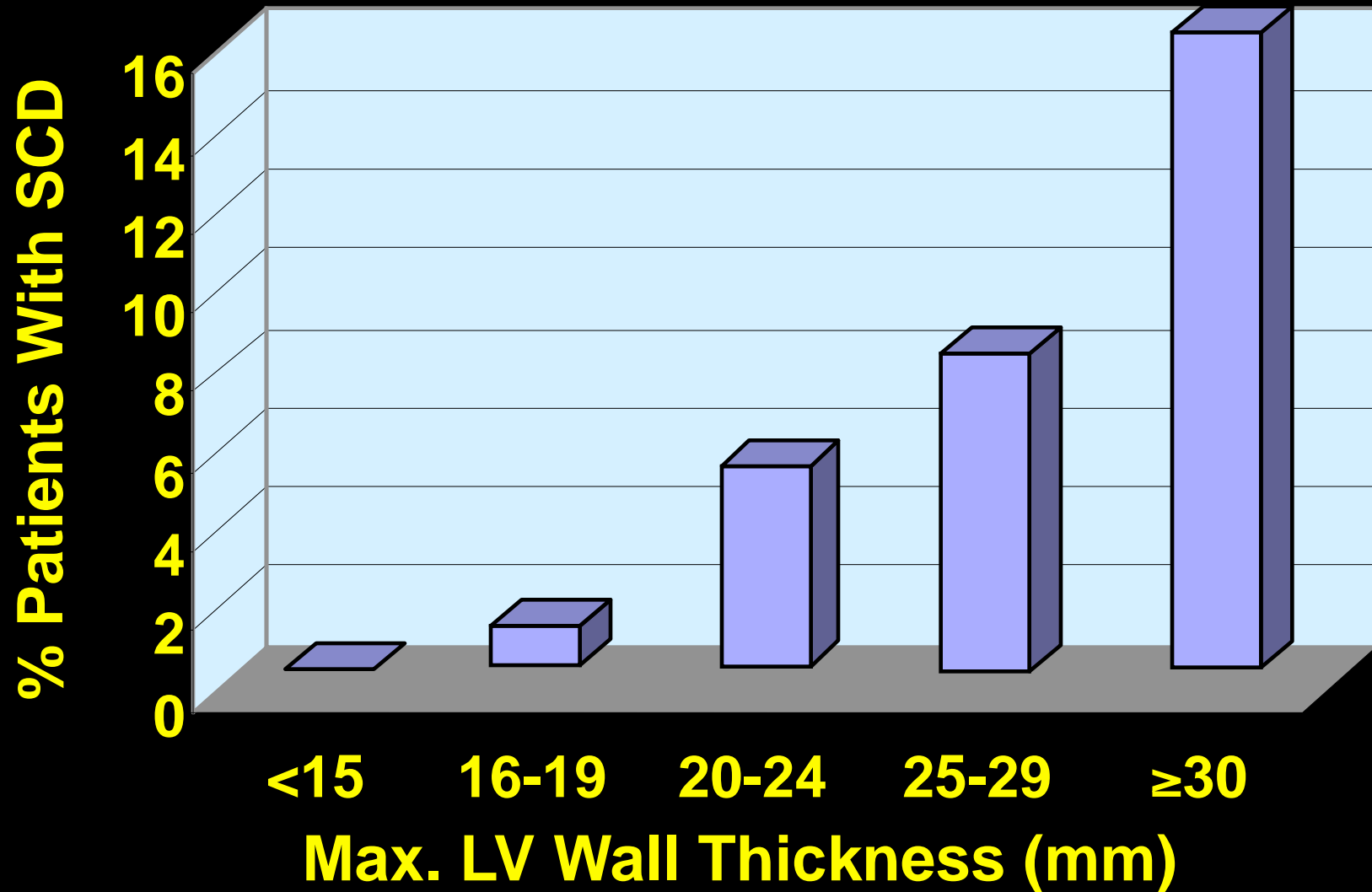


ST OF HEALTH
NELL, MICHAEL
S 2
ON

0536



Relation Between LV Wall Thickness & Likelihood of Sudden Death in 482 HCM Patients



Hypertrophic Cardiomyopathy

Sarcomeric Protein Mutations

Non-Sarcomeric Mutations

~ 11 Genes---
or more?
> 500 mutations

AMP-Kinase
(PRKAG2)

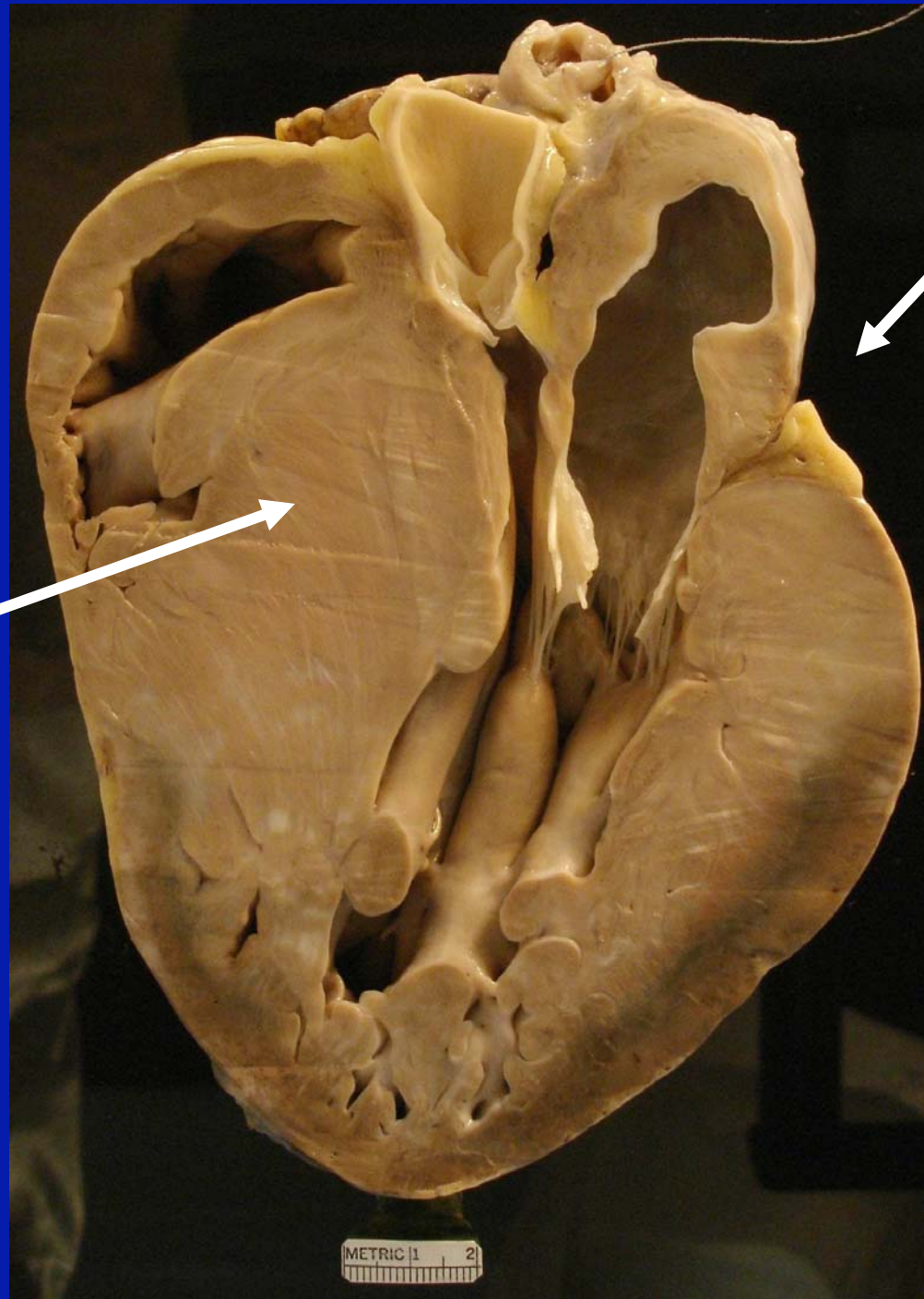
Fabry
Disease

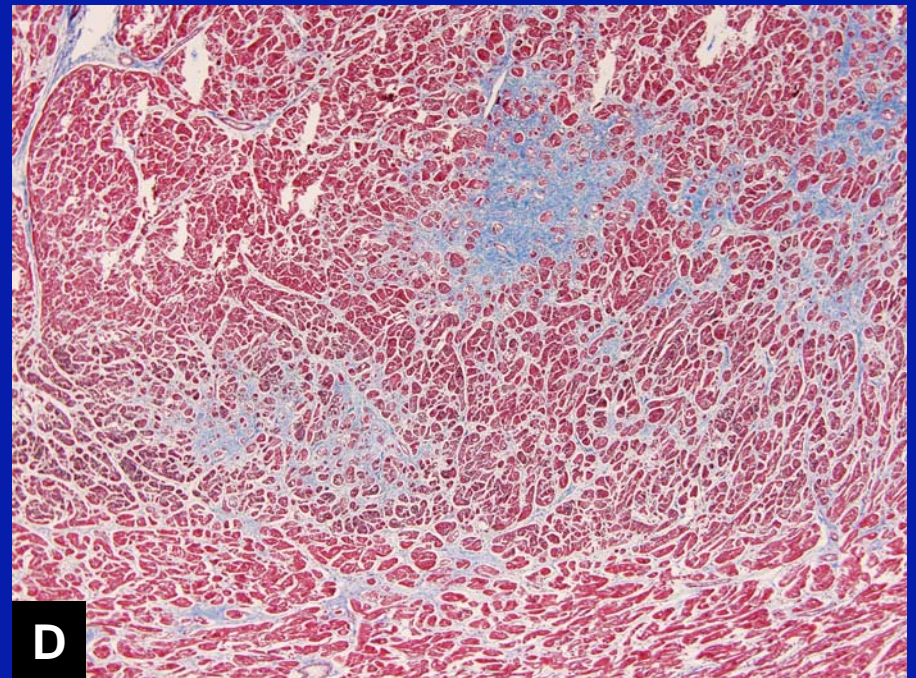
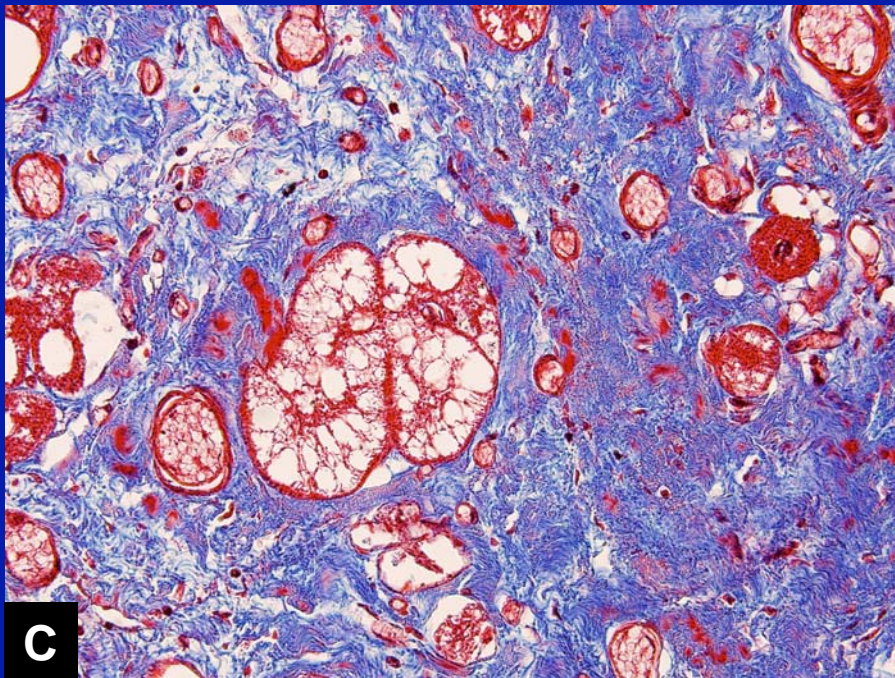
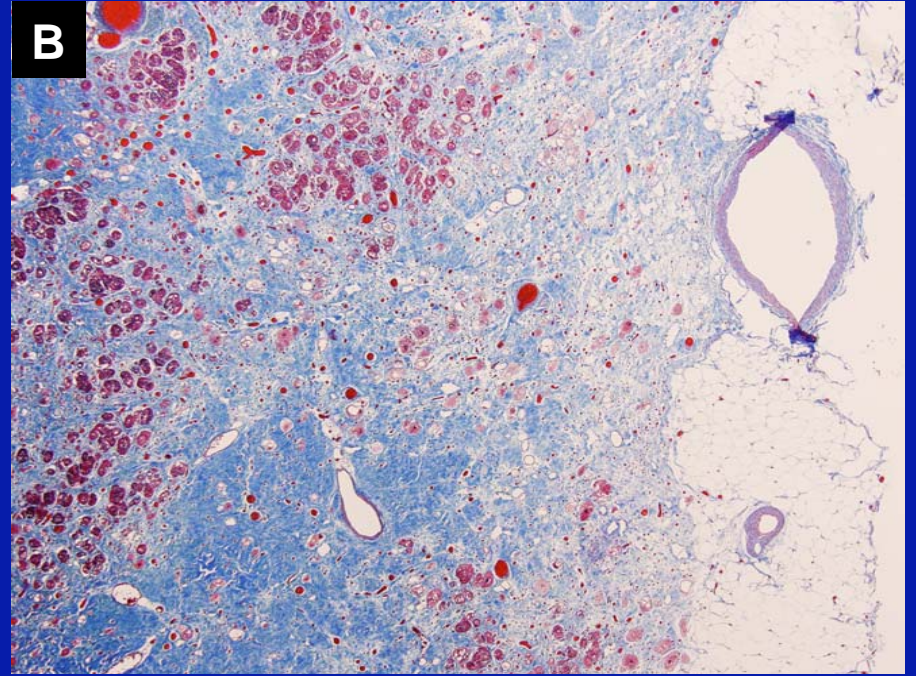
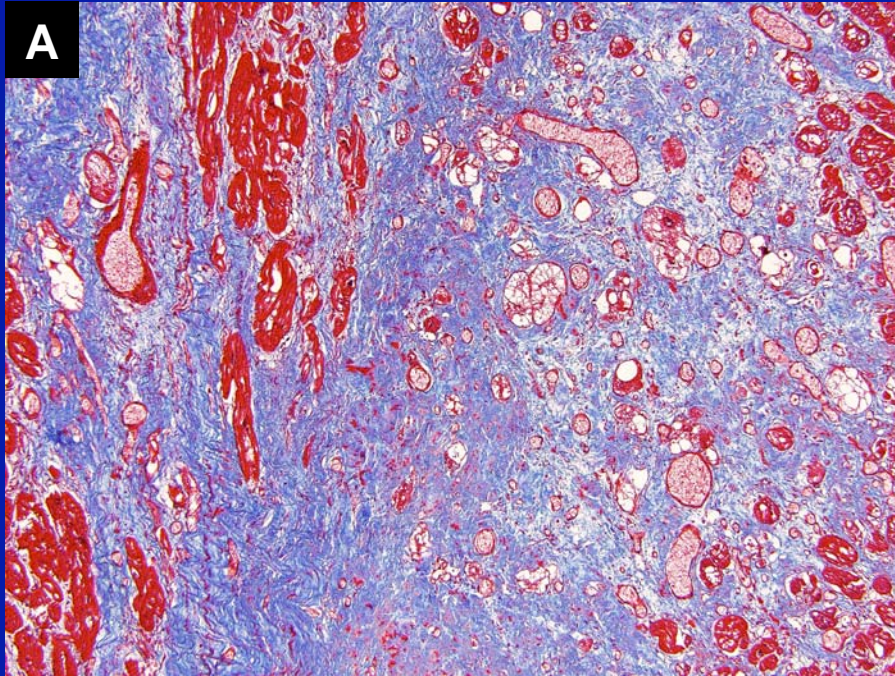
Lamp2
(Danon)

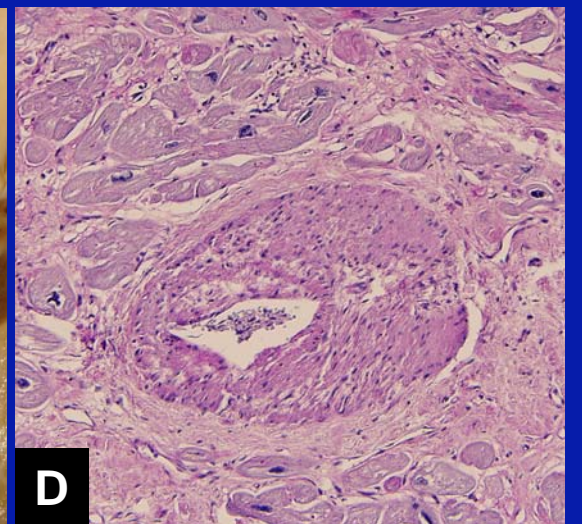
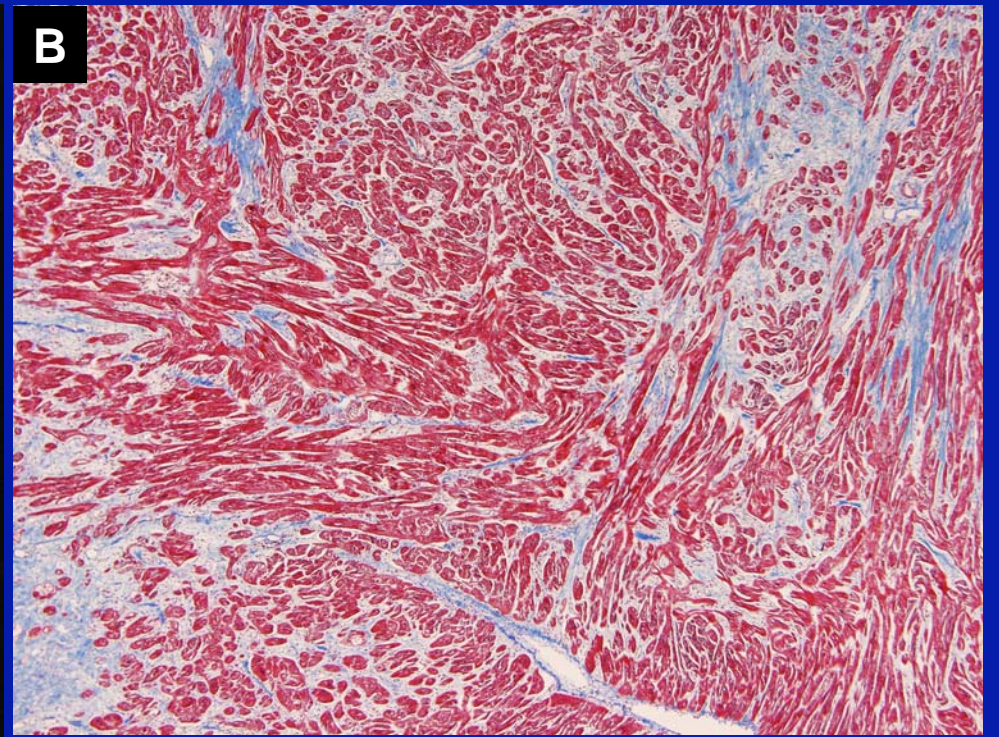
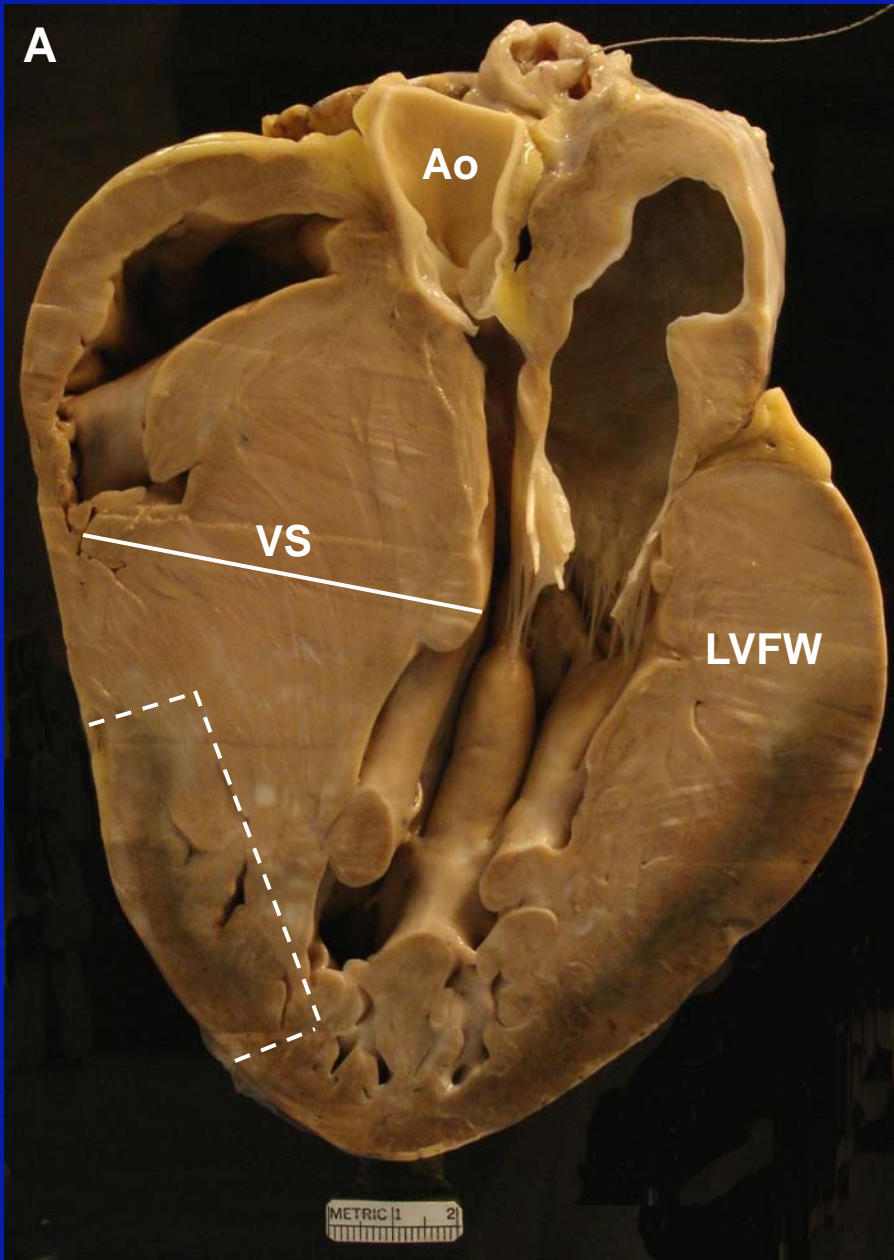
Storage Diseases

1416 g

65 mm







Clinical Implications of LAMP2 Cardiomyopathy

- **Survival after age 25 years unlikely**
- **Requires molecular diagnosis**
- **Deserves consideration for heart transplantation**